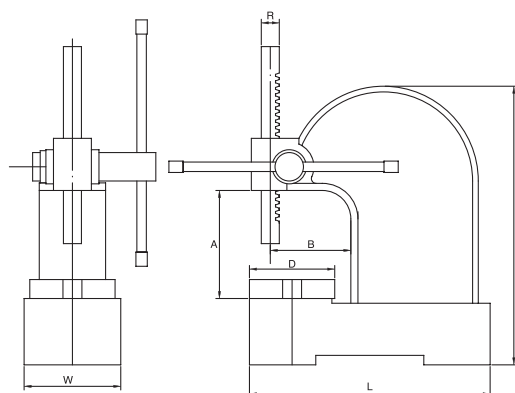


STANDARD TYPE

- All main parts made of ductile cast iron. Adjustable handle gives convenient handle positioning.
- Ram finite control by smooth gears.
- 4-90 degree equally divided slotted round table.
- Color may vary. (Green)



ORDER NO.	Base LxW(mm)	Height H(mm)	MAX Work Height A(mm) Stroke	Swing B	Table Diameter D	Ram Dimension RxR	Weight (kgs)	CODE NO.
VAR-0	235x102mm	254	114	85	90	19x19	8.5	7002-100
VAR-1	270x127mm	320	140	105	110	25.4x25.4	12	7002-101
VAR-2	400x170mm	445	215	135	170	31.7x31.7	29	7002-102
VAR-3	470x200mm	570	317	135	170	38.1x38.1	47	7002-103
VAR-5	680x250mm	800	470	245	250	50.8x50.8	140	7002-104



RATCHET LEVERS TYPE

This arbor press with all standard's feature. But operated with a ratchet device that will allow you to use the lever in the most convenient position, the lever has a counterweight for quick return after which the down stroke handwheel will return the ram to the work quickly.

- Ratchet Type Arbor Press available-No. 3/5 only. The size is same as VAR-3, 5 Color may be varied. (Green)

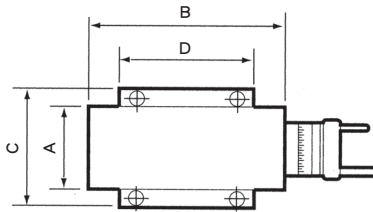
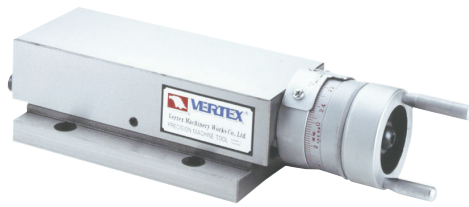
ORDER NO.	VARR-3	VARR-5
G.W. KGS	65 kgs	162 kgs
CODE NO.	7002-131	7002-132



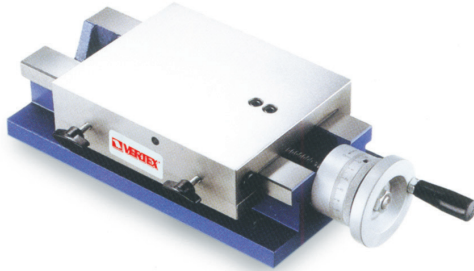
One Way Acme Thread Slide Table



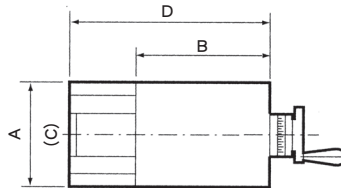
VERTEX®



- Material : FC-30
- Precision : $\pm 0.01 / 100\text{mm}$



ST-75 ST-100 ST-125



STA-160 STA-165 STA-200
STA-205 STA-300 STA-305

- Material : FC-30
- Precision : $\pm 0.01 / 100\text{mm}$
- FEATURE : The sliding surfaces are treated by heat-treatment & precision ground.

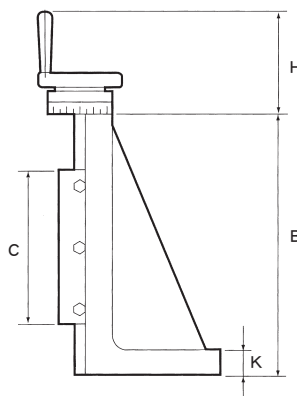
Specifications

Unit: mm

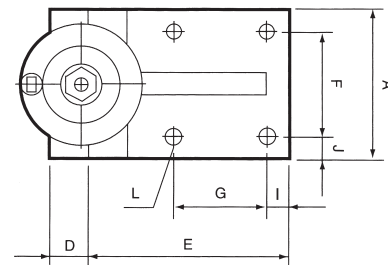
ORDER NO.	A x B Table surface	C x D Base area	Stroke	Total height	Dial graduation	WEIGHT kgs	CODE NO.
ST-75	75 x 180	105 x 157	75	60	2.5 x 0.02	6.5	7002-540
ST-100	100 x 235	140 x 160	100	70	2.5 x 0.02	9.5	7002-541
ST-125	125 x 300	165 x 255	125	80	4.0 x 0.02	18.5	7002-542
STA-160	160 x 200	160 x 300	100	90	4.0 x 0.02	20	7002-543
STA-165	160 x 200	160 x 400	200	90	4.0 x 0.02	23.0	7002-544
STA-200	200 x 300	200 x 400	100	120	4.0 x 0.02	38.0	7002-545
STA-205	200 x 300	200 x 600	300	120	4.0 x 0.02	50.5	7002-546
STA-300	300 x 350	300 x 500	150	188	4.0 x 0.02	98.0	7002-547



Vertical Dovetail Slide Table



- Material : FC-30
- Precision : $\pm 0.01 / 100\text{mm}$
- FEATURE : The sliding surfaces are treated by heat-treatment & precision ground
Dial graduation 4.0 x 0.02mm



Specifications

Unit: mm

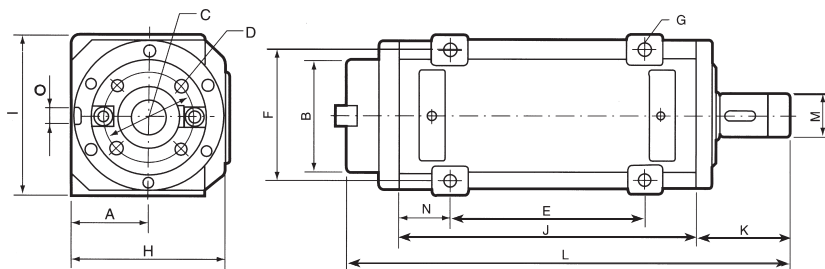
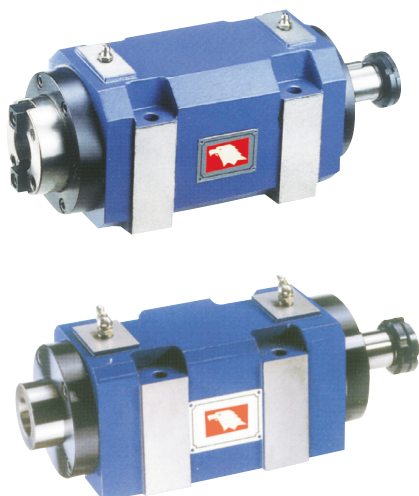
ORDER NO.	A	B	C	D	E	F	G	H	I	J	K	L	Weight kgs	CODE NO.
SE-100	100	255	150	35	130	70	60	120	30	15	26	Ø10 x 4	15	7002-560
SE-150	150	385	200	40	185	110	90	120	20	20	35	Ø13 x 4	35	7002-561
SE-200	200	510	250	60	240	160	140	135	20	20	40	Ø17 x 4	67	7002-562
SE-250	250	600	300	60	280	200	160	140	25	25	40	Ø17 x 4	115	7002-563



Precision Boring/Milling Spindle Head



VERTEX®



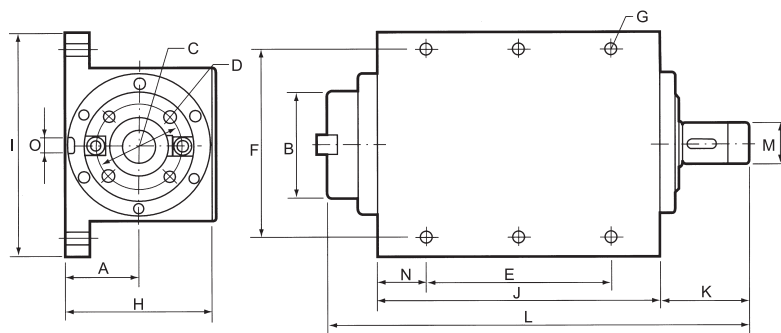
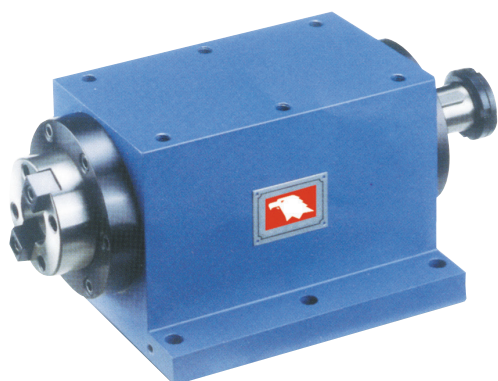
Specifications

Unit: mm

ORDER NO.	Taper	MAX. R.P.M.	A	B	C	D	E	F	G	H	I	J	K	L	M	N	O	Weight kgs	Bearing O.D.	CODE NO.
SH03	MT3	7000	45	Ø42			80	70	Ø9-4	90	90	160	75	270	Ø25	35	16x5	8	Ø62 Ø55	7002-600
SH04	MT4	2500	70	Ø88.882			190	90	Ø15-4	145	150	280	94	427	Ø35	45	16x5	36	Ø90	7002-601
SH30	NT30	3000	55	Ø69.832	Ø54	M10xP1.5-4	120	90	Ø11-4	114	114	200	72	317	Ø30	40	16x5	18	Ø75	7002-603
SH40	NT40	2500	70	Ø88.882	Ø66.7	M12xP1.75-4	190	150	Ø15-4	170	184	280	106	427	Ø35	45	16x5	39	Ø90	7002-605
SH50	NT50	2000	85	Ø128.57	Ø101.6	M16xP2.0-4	220	150	Ø15-4	170	184	340	106	500	Ø50	60		75	Ø115	7002-607



Precision Boring/Milling Spindle Head



Specifications

Unit: mm

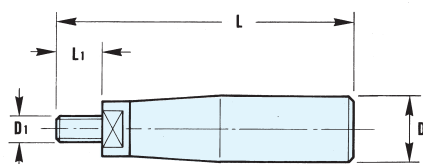
ORDER NO.	Taper	MAX. R.P.M.	A	B	C	D	E	F	G	H	I	J	K	L	M	N	O	Weight kgs	Bearing O.D.	CODE NO.
SH30A	NT30	3000	77	Ø69.832	Ø54	M10xP1.5-4	160	140	Ø11-6	133	176	200	72	317	Ø30	10	16x5	22	Ø75	7002-620
SH30B	NT30	9000	77	Ø69.832	Ø54	M10xP1.5-4	160	140	Ø11-6	133	176	200	72	317	Ø30	10	16x5	22	Ø75	7002-621
SH40A	NT40	2500	77	Ø88.882	Ø66.7	M12xP1.75-4	180	170	Ø11-6	147	200	220	94	367	Ø35	20	16x5	45	Ø90	7002-622
SH40B	NT40	8000	77	Ø88.882	Ø66.7	M12xP1.75-4	180	170	Ø11-6	147	200	220	94	367	Ø35	20	16x5	45	Ø90	7002-623

SPECIAL USAGE MACHINE

Flat End Movable Handle



NEW



THREAD

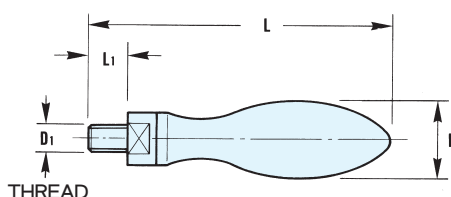
Flat End Movable Handle

- Handle is foggy plating treated.
- Detachable nut is blackened.
- Fit to common movable handwheel.
- Ready to use.
- Good handing.

ORDER NO.	D ₁	D	L ₁	L	CODE NO.
VFE-10	M10x1.5P	22	16	95	7003-001
VFE-83	3/8"x16	22	16	99	7003-002
VFE-8	M8x1.25P	19	16	93	7003-003
VFE-165	5/16"x18	19	10	78	7003-004

Ellipse Movable Handle

NEW



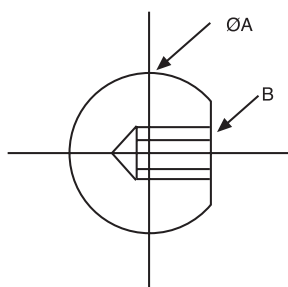
THREAD

Ellipse Movable Handle

- Brilliant or foggy plating surface.
- Fit to common movable handwheel.
- Easy to install
- Shine and good looking.

ORDER NO.	D ₁	D	L ₁	L	CODE NO.
VEM-10	M10x1.5P	26	13	95	7003-007
VEM-83	3/8"x16	25	13	95	7003-008
VEM-8	M8x1.25P	20	9	80	7003-009
VEM-6	M6x1.0P	16	7	60	7003-010

Ball Knobs



Name	Material	Surfaced process
Knob	Bakelite (KU)	Black

mm

ORDER NO. (KU)	A	B	CODE NO.
VKB-6AA	25	M6 x 1.0P	7003-120A
VKB-8A	25	M8 x 1.25P	7003-121A
VKB-8BA	38	M8 x 1.25P	7003-123A
VKB-10A	38	M10 x 1.5P	7003-124A
VKB-12AA	38	M12 x 1.75P	7003-127A
VKB-12BA	42	M12 x 1.75P	7003-128A

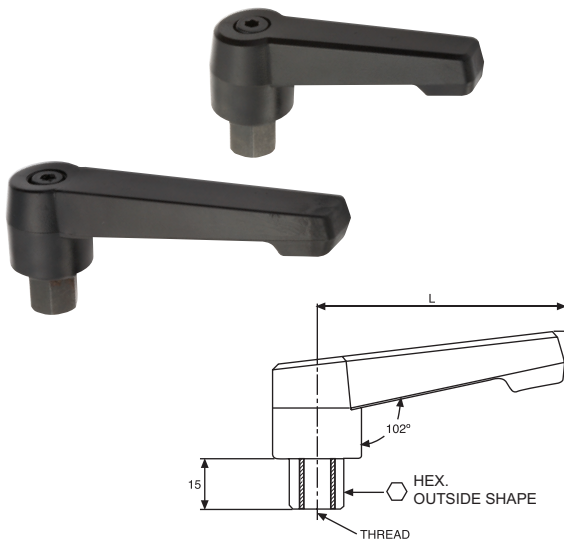


Name	Material	Surfaced process
Knob	(KT)	Black
Spindle	Steel (ST)	Zincing (ZI)

ORDER NO. (KT)	THREAD	KNOB	CODE NO.
VKB-8K	M8x1.25Px21L	Ø40x65L	7003-133
VKB-8KL	M8x1.25Px63L	Ø40x65L	7003-134A



Adjustable Hand Levers

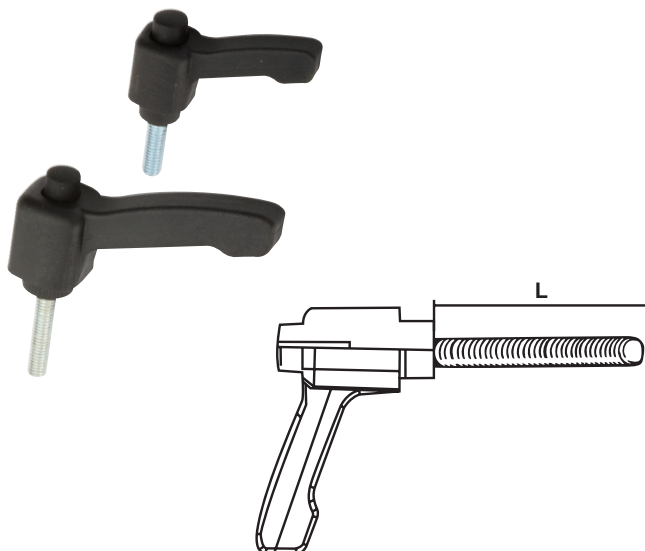


Name	Material	Surfaced process
Handle	Plastic (KT)	Black (BK) and black handle (OB)
Spindle	Steel (ST)	

ORDER NO. (KT)	HANDLE L	THREAD	mm	CODE NO.
VAH-6	42	M6	14	7003-214A
VAH-8	72	M8	14	7003-216A
VAH-10	92	M10	16	7003-217A
VAH-12	112	M12	16	7003-218A



Adjustable Hand Levers



Name	Material	Surfaced process
Handle	Plastic (KT)	Black Knob
Spindle	Steel (ST)	

ORDER NO. (KT)	THREAD L	HANDLE L	mm	CODE NO.
VAH-620	M6x1.0Px20L	43		7003-220A
VAH-630	M6x1.0Px30L	43		7003-220B
VAH-640	M6x1.0Px45L	43		7003-220C
VAH-650	M6x1.0Px20L	63		7003-220D
VAH-6XL	M6x1.0Px30L	63		7003-220E
VAH-8D	M8x1.25Px30L	63		7003-222A
VAH-815	M8x1.25Px15L	83		7003-222B
VAH-840	M8x1.25Px40L	83		7003-222D
VAH-1020	M10x1.5Px20L	83		7003-223A